

# RAYCORE™ LED Work Lights

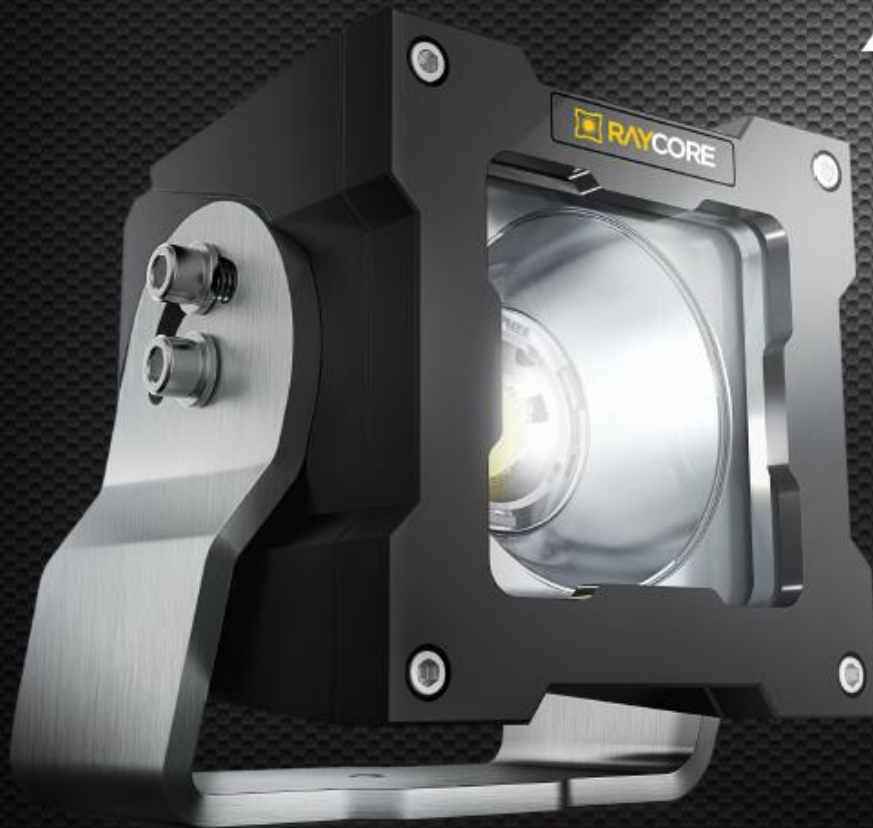
*ruggedized offroad LED lights designed to last*



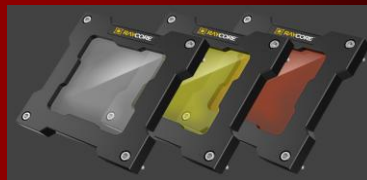
## Shine a Light on Safety

Contact us to schedule a free 30-day pilot test

**FLOWTECH FUELING**



# X10



### THE ULTIMATE LED WORK LIGHT

- ✓ Input Voltage Range: 9-24 VDC
- ✓ Nominal Power @ 24 VDC: 83 Watts
- ✓ Amp Draw @ 24 VDC: 3.48 Amps
- ✓ Raw Lumens: 10,940 Lm
- ✓ Weight (w/ bracket): 5.7 lbs
- ✓ Dimensions (incl. bracket): 5.8" x 5.45" x 5.8"
- ✓ Ingress Protection Rating: IP6K9K Waterproof
- ✓ ¼" Stainless Steel Trunnion Bracket
- ✓ Heavy Duty Aluminum Housing
- ✓ Replaceable High Impact Polycarbonate Lenses
- ✓ Adjustable Tilt: -30° to +90°
- ✓ Patent Pending Ruggedized Diode Array (RDA)
- ✓ Deutsch Connectivity
- ✓ Available Beam Patterns: Spot, Medium, Wide
- ✓ Operating Temp: -40°C to +85°C w/ built in Overheat Protection
- ✓ Under/Over Voltage Protection



## COMPREHENSIVE FUELING SOLUTIONS

*that won't impact the environment or your bottom line*

OVERFILL PREVENTION SYSTEMS – MOBILE FUEL DEPOTS  
HIGH FLOW FUEL FILTRATION – FUEL/LUBE CONNECTORS  
FUEL NOZZLES SALES & REPAIR – RUGGEDIZED LED LIGHTS



- ✓ Lifespan: 50,000+ Hours
- ✓ Reverse Voltage Protection
- ✓ Color Temperature: 5,000 K
- ✓ Interchangeable Lenses to Customize Beam Pattern & Color
- ✓ High & Low Power Modes (selectable by wiring installation)

*seeing is believing with our free 30-day pilot test*

Contact Fritz Kruger | 307.696.9754 | fritzkr@flowtechfueling.com

www.flowtechfueling.com